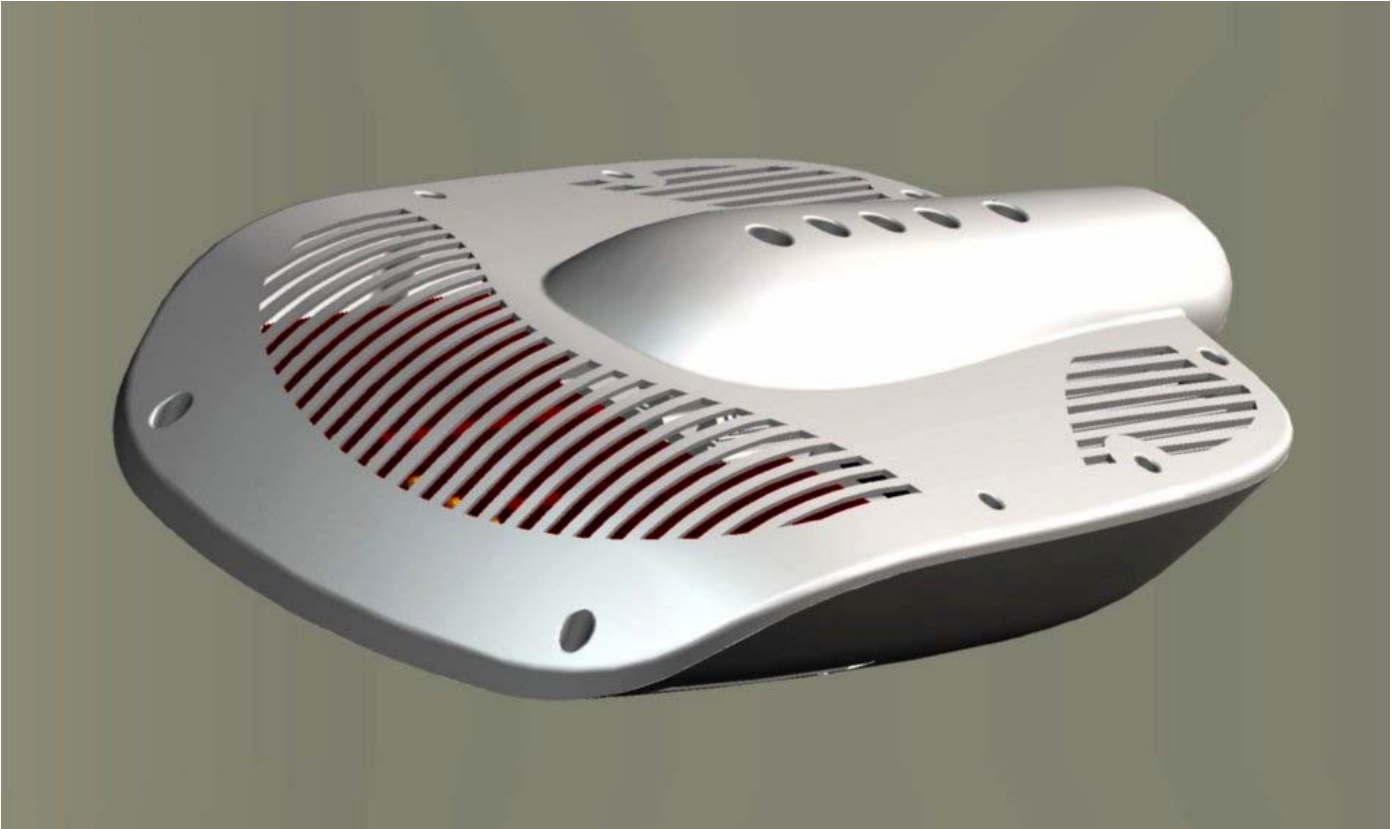




Street Light 180W



Product Characteristics :

10,000 Lm

LED lifetime over 50,000 hours

Best design and cost-effective

Weatherproof (Self Cleaning)

Light Engine Limited

6/F, Photonics Centre, 2 Science Park East Avenue, Hong Kong Science Park, Shatin, Hong Kong
Tel+ (852) 2144 2082 Fax+ (852) 2144 2081 sales@lightengine-tech.com www.lightengine-tech.com



180W STREET LIGHT SPECIFICATION

MECHANICAL SPEC

Housing	Aluminum with coating
Outer Dimension	L: 690mm x W: 445mm x D: 190mm
Housing Color	Silver
Weight	14Kg

ELECTRICAL SPEC

Power Requirement	Transformer constant 24VDC output for Lighting Module
Power Consumption	180W Above 90% Efficiency for LED driver board ~85% Efficiency for Transformer

ENVIRONMENTAL SPEC

Operating Temperature	-30 ~ 50°C
Storage Temperature	-40 ~ 80°C
Body Temperature	< 60°C @ 25°C (ambient)
IP Level	IP66
LED Lifetime	> 50,000hrs

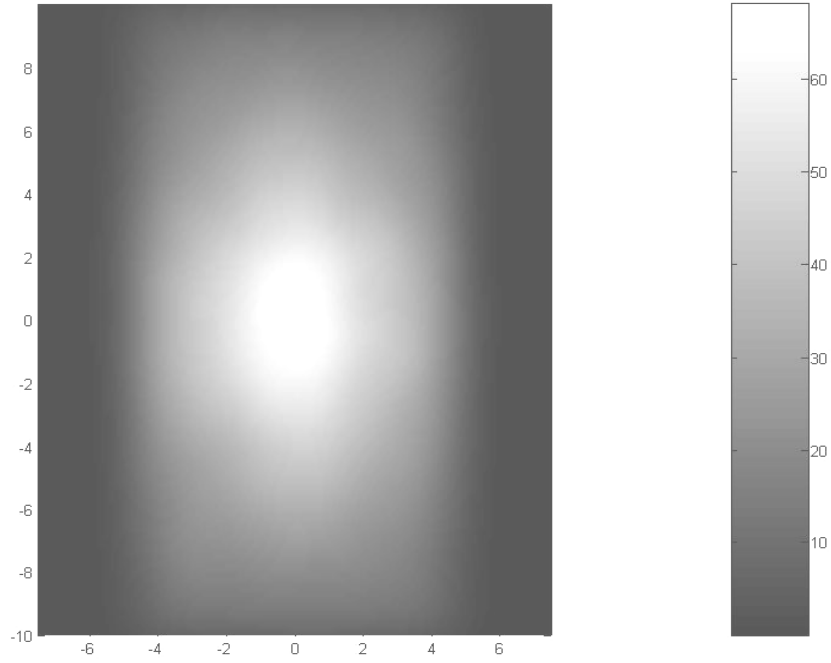
OPTICAL SPEC

Beam Angle	X (Direction follow the road): 100±5° Y (Direction cross the road): 60±5°
Color Temperature	5000K/2700K
Illuminance(Central)	130 Lux for 6m High 70 Lux for 8m High 45 Lux for 10m High 30 Lux for 12m High

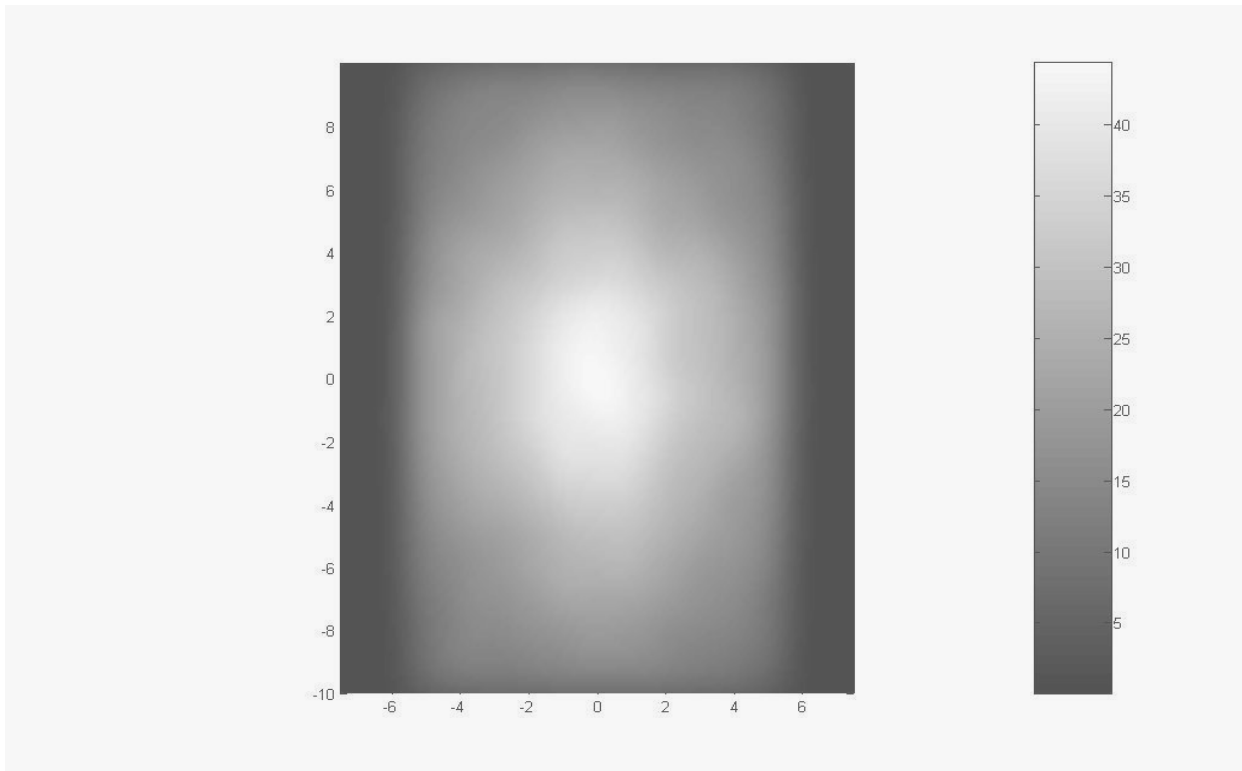
OPTICAL PERFORMANCE

Illuminance at road surface

Light Engine Limited



8 Meters High



10 Meters High

Light Engine Limited



DIMENSION



Light Engine Limited

6/F, Photonics Centre, 2 Science Park East Avenue, Hong Kong Science Park, Shatin, Hong Kong
Tel+ (852) 2144 2082 Fax+ (852) 2144 2081 sales@lightengine-tech.com www.lightengine-tech.com